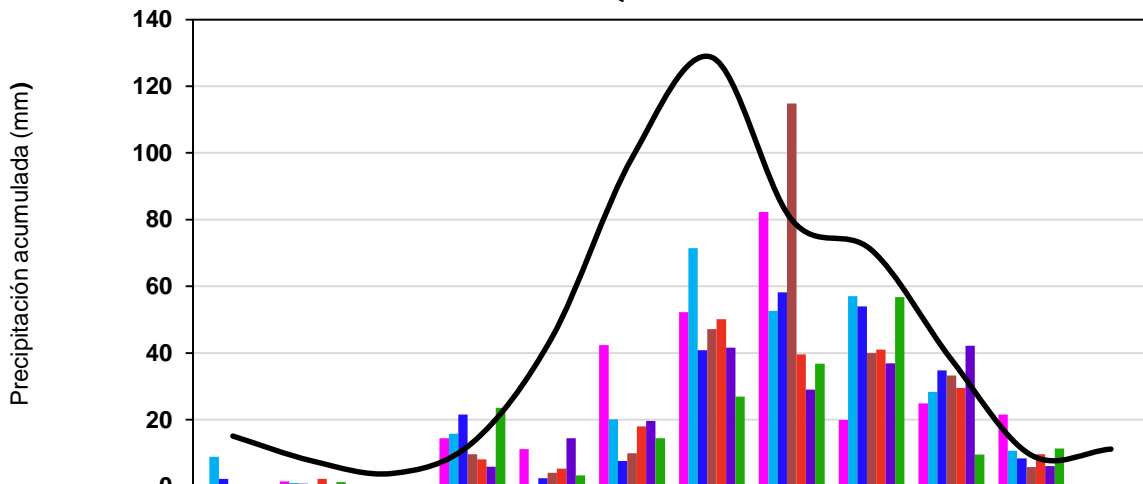


**CENTRO HIDROMETEOROLÓGICO  
 REPORTE DE PRECIPITACIÓN ACUMULADA  
 AL DÍA 27 DE NOVIEMBRE DEL 2022  
 ZONA METROPOLITANA DE QUERÉTARO**



|                                  | Ene  | Feb | Mar | Abr  | May  | Jun  | Jul   | Ago   | Sep  | Oct  | Nov  | Dic  |
|----------------------------------|------|-----|-----|------|------|------|-------|-------|------|------|------|------|
| <b>Santa Rosa</b>                | 0.4  | 1.5 | 0.0 | 14.5 | 11.2 | 42.4 | 52.3  | 82.3  | 19.9 | 24.9 | 21.6 | 0.0  |
| <b>UTEQ</b>                      | 8.9  | 1.0 | 0.0 | 15.8 | 0.5  | 20.1 | 71.4  | 52.6  | 57.1 | 28.4 | 10.7 | 0.0  |
| <b>Plaza Altamira</b>            | 2.3  | 0.8 | 0.0 | 21.6 | 2.5  | 7.6  | 40.8  | 58.2  | 54.0 | 34.8 | 8.4  | 0.0  |
| <b>Jurica</b>                    | 0.0  | 0.0 | 0.0 | 9.7  | 4.1  | 9.9  | 47.2  | 114.8 | 40.0 | 33.3 | 5.8  | 0.0  |
| <b>Of. Centrales</b>             | 0.4  | 2.3 | 0.0 | 8.1  | 5.3  | 18.0 | 50.1  | 39.6  | 41.0 | 29.5 | 9.7  | 0.0  |
| <b>Pueblo Nuevo</b>              | 0.0  | 0.0 | 0.0 | 5.9  | 14.5 | 19.6 | 41.6  | 29.0  | 36.9 | 42.2 | 6.1  | 0.0  |
| <b>Centro de Congresos</b>       | 0.0  | 1.3 | 0.0 | 23.6 | 3.3  | 14.5 | 26.9  | 36.8  | 56.8 | 9.6  | 11.4 | 0.0  |
| <b>Media Histórica 1971-2000</b> | 15.1 | 7.6 | 3.9 | 13.1 | 44.8 | 98.5 | 128.7 | 80.0  | 70.9 | 38.1 | 9.4  | 11.2 |

