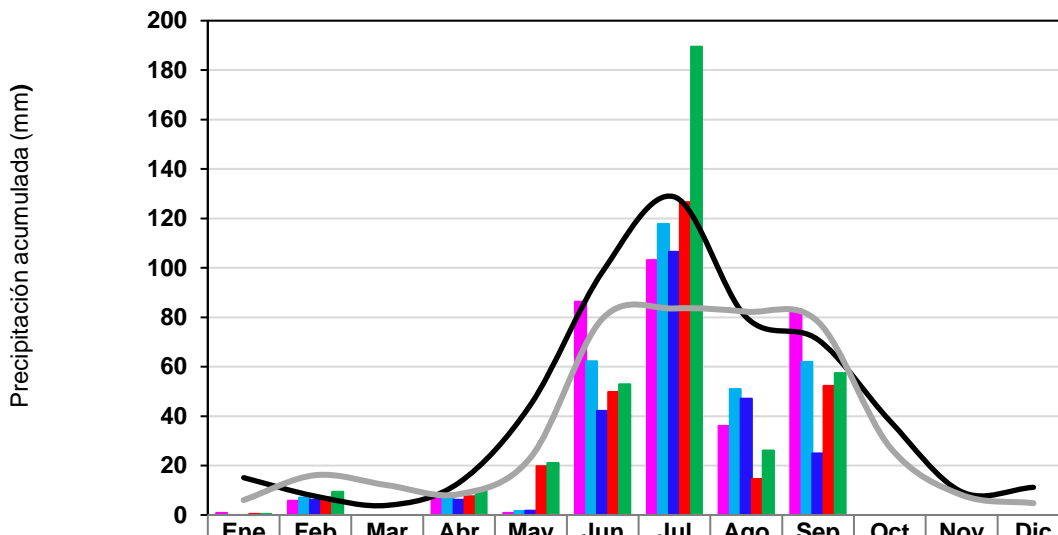


**CENTRO HIDROMETEOROLÓGICO  
 REPORTE DE PRECIPITACIÓN ACUMULADA  
 AL DÍA 04 DE OCTUBRE DEL 2024  
 ZONA METROPOLITANA DE QUERÉTARO**



	Ene	Feb	Mar	Abr	May	Jun	Jul	Ago	Sep	Oct	Nov	Dic	Annual	(%)
<b>Santa Rosa</b>	0.8	5.8	0.0	6.6	0.8	86.3	103.1	36.0	83.3	0.0	0.0	0.0	322.7	61.9
<b>UTEQ</b>	0.0	7.1	0.0	7.1	1.6	62.2	117.8	50.9	62.0	0.0	0.0	0.0	308.7	59.2
<b>Plaza Altamira</b>	0.0	6.1	0.0	6.1	1.8	42.2	106.5	47.1	24.9	0.0	0.0	0.0	234.7	45.0
<b>Area central (CEA)</b>	0.5	7.1	0.0	7.6	19.8	49.8	126.5	14.5	52.2	0.0	0.0	0.0	278.0	53.3
<b>San Antonio de la Punta</b>	0.5	9.4	0.0	10.2	21.1	52.9	189.5	26.1	57.4	0.0	0.0	0.0	367.1	70.4
<b>Media Histórica 1971-2000</b>	15.1	7.6	3.9	13.1	44.8	98.5	128.7	80.0	70.9	38.1	9.4	11.2	521.3	100
<b>Media Histórica 2008-2023 (CEA)</b>	6.0	16.1	12.0	8.4	23.4	79.5	83.6	82.3	78.2	27.5	8.1	4.8	429.9	100

